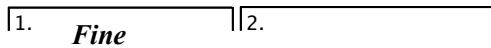
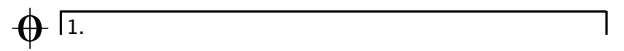


Fiesta Espana

Paso Doble

Mus.: Vincent MENWEG



D.S al Coda

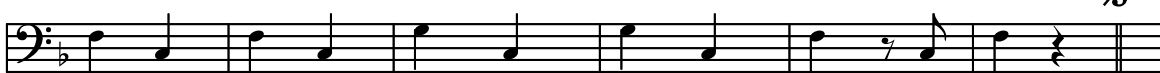


Coda

Trio



D.S al Fine



Fiesta Espana

Paso Doble

Mus.: Vincent MENWEG

♩ = 116



The first section of the score consists of 11 staves of music. It begins with a treble clef, a key signature of one sharp (F#), and a 2/4 time signature. The tempo is marked as quarter note = 116. The music features a variety of rhythmic patterns, including eighth and sixteenth notes, and includes several triplet markings. A repeat sign is placed at the beginning of the first staff. The section concludes with a first ending marked '1.' and a second ending marked '2.', with the word 'Fine' centered between them.

Fine

D.S al Coda

Coda

Trio

The second section of the score, labeled 'Coda' and 'Trio', consists of 10 staves of music. It begins with a treble clef, a key signature of three sharps (F#, C#, G#), and a 2/4 time signature. The music is characterized by a steady eighth-note rhythm. A 'Trio' section is indicated by a double bar line and a change in key signature to three sharps. The section ends with a double bar line and the instruction 'D.S al Fine'.

D.S al Fine

Fiesta Espana

Paso Doble

Mus.: Vincent MENWEG

Dm *A7*

Dm

D7 *Gm*

Dm *A7* *Dm* *A7*

1. *Dm Fine* 2. *A7* *Dm* *A7* *D*

H7 *Em* *A7* *D*

A7 *D* *A7* *D* *D.S. al Coda*

Coda *A7* *D* *Trio* *D*

A7

D *A7* *D* *A7* *D* *C7* *F*

C7

F *C7* *F* *C7* *F* *D.S. al Fine*

Fiesta Espana

Paso Doble

Mus.: Vincent MENWEG

♩ = 116 Dm

1. $A7$ Dm $A7$ Dm Fine 2. $A7$

Dm $A7$ $D7$ $H7$

Em $A7$ D

$A7$ D $A7$ D D.S. al Coda

Coda $A7$ D $A7$ *Trio* D

$A7$ D $A7$

D $A7$ D $C7$ F

$C7$ F

$C7$ F $C7$ F D.S. al Fine

Sax Alto

Fiesta Espana

Paso Doble

Mus.: Vincent MENWEG

♩ = 116

1. *Fine* 2.

8

D.S. al Coda

Coda

Trio 2

2

2

2

D.S. al Fine

Fiesta Espana

Paso Doble

Mus.: Vincent MENWEG

1. Fine 2.

8

⊕ Coda

Trio 2

2 5 3

2 2

7 D.S al Fine

Bb Trompette

Fiesta Espana

Paso Doble

Mus.: Vincent MENWEG

$\text{♩} = 116$

2 2 2 2 2 2

4 4 *Fine* 3

8 *D.S. al Coda*

Coda

Trio

D.S. al Fine